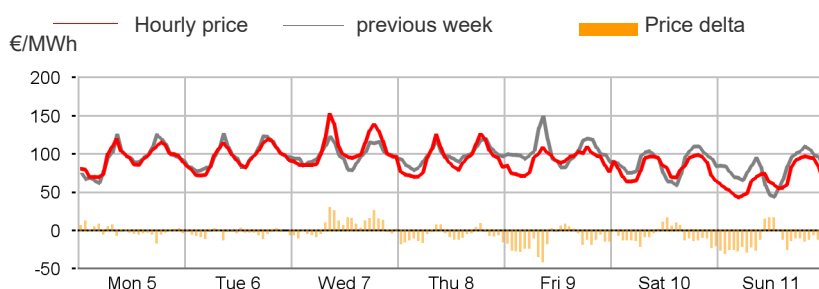


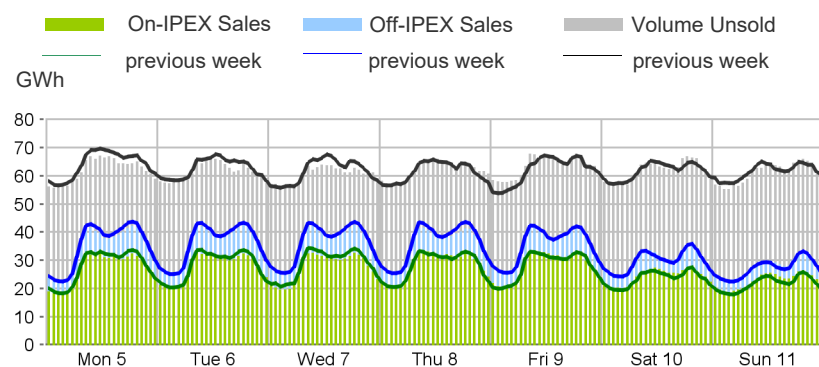
Purchasing Price

	Average	Change	
	€/MWh	Absolute	%
Baseload	90.66	-5.02	-5.2%
Peak	104.85	-0.33	-0.3%
Off-peak	82.78	-7.62	-8.4%
Hourly minimum	43.40		
Hourly maximum	153.04		



Volumes Offered, Sold and Purchased

	Total	Average	Change
	MWh	MWh	%
Bids/offers			
National	8,866,279	52,775	+0.4%
Foreign	1,466,690	8,730	-10.1%
Total	10,332,969	61,506	-1.2%
Sales			
National	4,079,358	24,282	+0.5%
Foreign	1,460,796	8,695	-10.3%
Total	5,540,155	32,977	-2.6%
Purchases			
National	5,487,144	32,662	-2.3%
Foreign	53,008	316	-23.0%
Total	5,540,155	32,977	-2.6%



Electricity Supply

	MWh	Change	Structure
IPEX	4,403,330	-1.8%	79.5%
Market Participants	2,634,609	+4.5%	47.6%
GSE	334,378	-9.8%	6.0%
Foreign zones	1,434,342	-9.8%	25.9%
Balance of PCE schedules	-	-	-
PCE (including MTE)	1,136,825	-5.7%	20.5%
Foreign zones	26,454	-32.4%	0.5%
National zones	1,110,371	-4.8%	20.0%
Balance of PCE schedules	-	-	-
VOLUMES SOLD	5,540,155	-2.6%	100.0%
VOLUMES UNSOLD	4,792,814	+0.4%	
TOTAL SUPPLY	10,332,969	-1.2%	

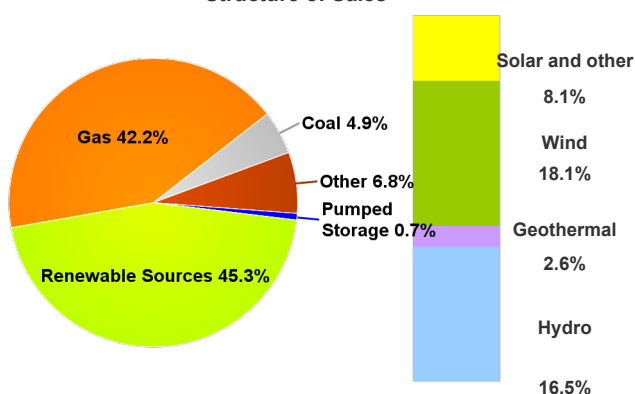
Electricity Demand

	MWh	Change	Structure
IPEX	4,403,330	-1.8%	79.5%
Acquirente Unico	360,861	-7.5%	6.5%
Other market participants	3,308,505	-3.6%	59.7%
Pumped-storage plants	6,574	49.52	0.1%
Foreign zones	53,008	-23.0%	1.0%
Balance of PCE schedules	674,378	+15.2%	12.2%
PCE (including MTE)	1,136,825	-5.7%	20.5%
Foreign zones	-	-	-
Acquirente Unico - National zones	-	-	-
Other participants - National zones	1,811,203	+1.2%	32.7%
Balance of PCE schedules	-674,378	-	-
VOLUMES PURCHASED	5,540,155	-2.6%	100.0%
VOLUMES UNPURCHASED	244,869	-14.9%	
TOTAL DEMAND	5,785,024	-3.2%	

Volumes Sold by Source

	Total	Average	Change	
	MWh	MWh	MWh	%
Conventional	2,201,423	13,104	-1,746	-11.8%
Gas	1,722,930	10,256	-1,864	-15.4%
Coal	199,587	1,188	+218	+22.5%
Other	278,907	1,660	-100	-5.7%
Renewable	1,847,964	11,000	+1,964	+21.7%
Hydro	674,688	4,016	-241	-5.7%
Geothermal	104,453	622	+2	+0.3%
Wind	736,652	4,385	+2,473	+129.4%
Solar and other	332,171	1,977	-270	-12.0%
Pumped Storage	29,971	178	-94	-34.6%
Total	4,079,358	24,282	+124	+0.5%

Structure of Sales



Zonal Selling Price

	Northern IT		Central-northern IT		Central-southern IT		Southern IT		Calabria		Sicilia		Sardegna	
	€/MWh	Var	€/MWh	Var	€/MWh	Var	€/MWh	Var	€/MWh	Var	€/MWh	Var	€/MWh	Var
Baseload	91.12	-5.0%	91.12	-5.0%	89.97	-5.5%	89.95	-5.5%	89.53	-6.0%	89.47	-6.0%	88.14	-7.4%
Peak	105.97	+0.1%	105.97	+0.1%	102.74	-1.0%	102.69	-1.1%	101.52	-2.2%	101.32	-2.4%	102.74	-1.0%
Off-peak	82.87	-8.3%	82.87	-8.3%	82.87	-8.4%	82.87	-8.4%	82.87	-8.4%	82.89	-8.3%	80.03	-11.5%
Hourly minimum	43.40		43.40		43.40		43.40		43.40		43.40		0.00	
Hourly maximum	155.10		155.10		155.10		155.10		140.00		140.00		155.10	

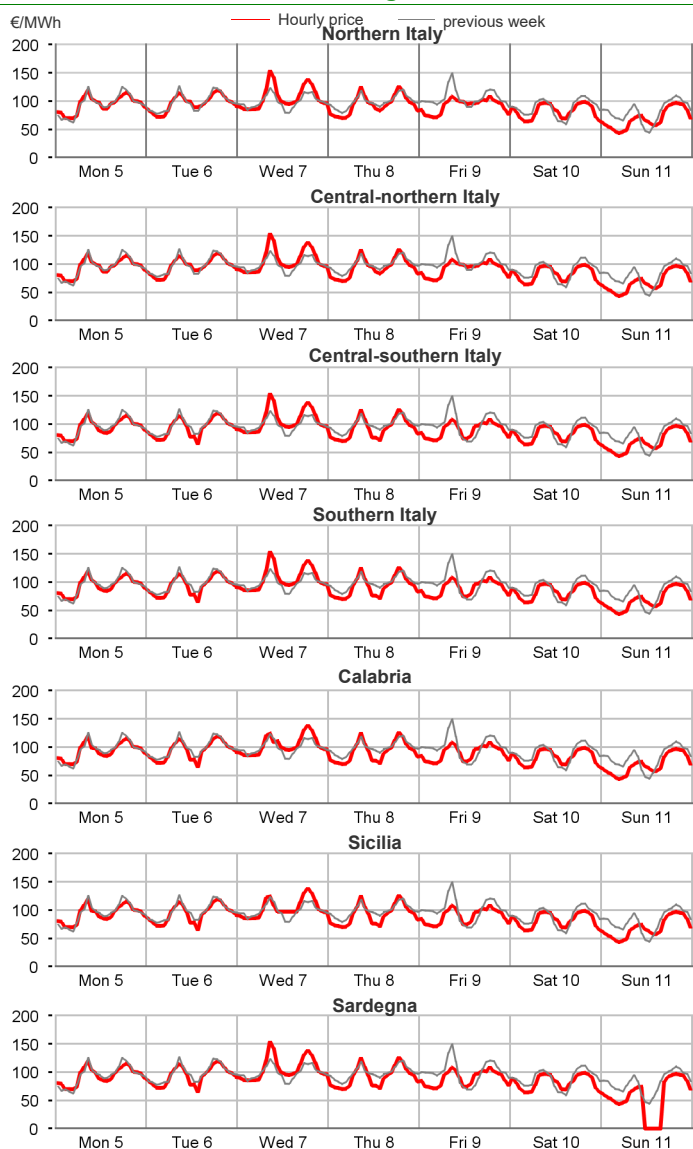
Zonal Volumes

	Northern IT		Central-northern IT		Central-southern IT		Southern IT		Calabria		Sicilia		Sardegna	
	MWh	Var	MWh	Var	MWh	Var	MWh	Var	MWh	Var	MWh	Var	MWh	Var
Offers														
Total	4,415,228	-2.9%	359,402	-1.7%	1,458,619	-2.0%	1,142,107	+13.0%	545,866	-6.0%	654,256	+12.5%	290,801	+13.6%
Average	26,281	-783	2,139	-36	8,682	-175	6,798	+785	3,249	-209	3,894	+431	1,731	+208
Sales														
Totale	1,824,194	-7.8%	274,295	-2.4%	606,272	+1.7%	640,562	+32.3%	152,351	-32.2%	325,239	+17.4%	256,445	+17.6%
Average	10,858	-913	1,633	-39	3,609	+61	3,813	+930	907	-430	1,936	+287	1,526	+228
Purchas														
Totale	3,162,299	-2.2%	461,783	-2.8%	954,846	-2.3%	332,713	-2.7%	103,796	-3.7%	310,678	-3.1%	161,030	-1.2%
Average	18,823	-419	2,749	-79	5,684	-136	1,980	-54	618	-24	1,849	-59	959	-11

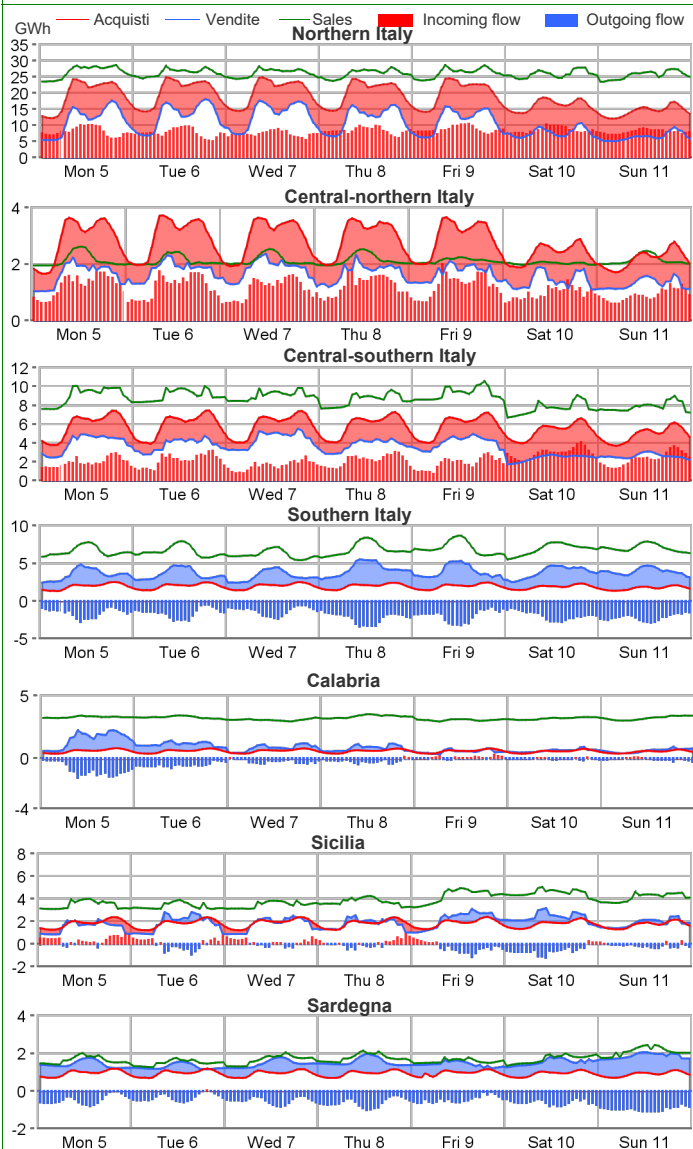
Volumes Sold by Source. Hourly Average

	Northern IT		Central-northern IT		Central-southern IT		Southern IT		Calabria		Sicilia		Sardegna	
	MWh	Var	MWh	Var	MWh	Var	MWh	Var	MWh	Var	MWh	Var	MWh	Var
Conventional	7,005	-7.4%	679	-1.2%	1,799	-18.9%	1,285	-3.4%	326	-61.7%	990	-15.0%	1,020	-1.3%
Gas	6,038	-8.6%	611	-2.3%	819	-44.4%	1,061	-5.0%	206	-72.4%	957	-4.3%	563	1.3%
Coal	-	-	-	-	807	38.5%	-	-	-	-	-	-	381	-1.7%
Other	967	0.7%	68	10.4%	173	5.3%	223	4.6%	119	13.4%	33	-80.1%	76	-15.9%
Renewable	3,716	-8.0%	953	-3.2%	1,789	46.0%	2,528	62.9%	581	19.5%	936	93.3%	495	87.5%
Hydro	2,567	-7.2%	166	-11.7%	532	-6.8%	423	2.4%	134	-5.4%	148	10.8%	46	9.5%
Geothermal	-	-	622	0.3%	-	-	-	-	-	-	-	-	-	-
Wind	37	101.1%	42	329.3%	1,029	189.3%	1,866	106.9%	395	37.8%	656	199.8%	360	199.7%
Solar and other	1,112	-11.3%	123	-26.0%	229	-23.5%	239	0.9%	52	-10.2%	133	0.5%	90	-12.1%
Pumped Storage	137	-18.9%	-	-	20	-80.3%	1	3.6%	-	-	10	-	11	9,754.0%
Total	10,858	-7.8%	1,633	-2.4%	3,609	1.7%	3,813	32.3%	907	-32.2%	1,936	17.4%	1,526	17.6%

Zonal Selling Price

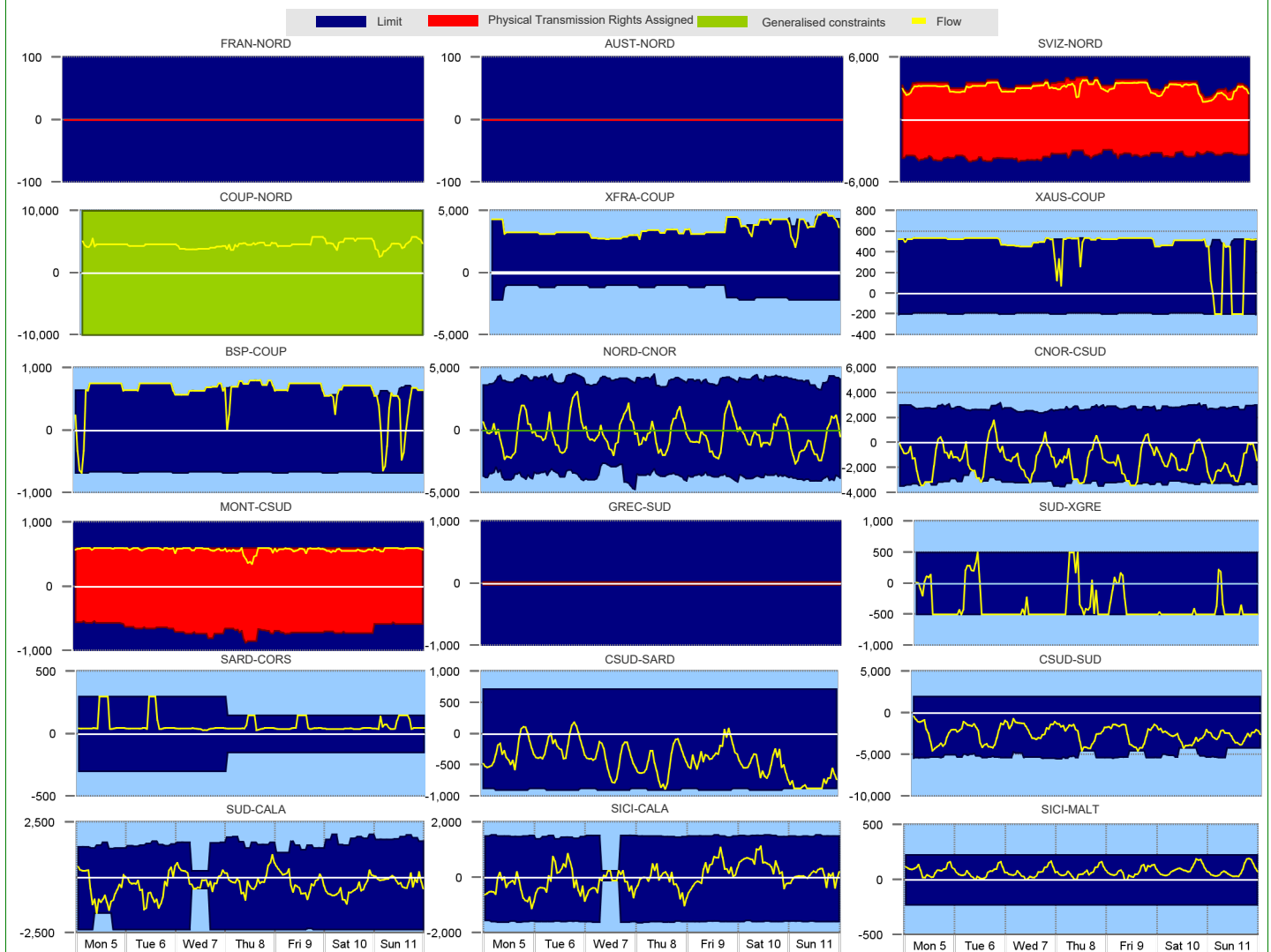


Zonal Volumes



		Rent		Direction frequency		Average Physical Transmission Rights Assigned		Average flow		Average use of Physical Transmission Rights Assigned	
		Thousands of €		% of hours		MWh		MWh		%	
		Week no. 6	Week no. 5	Week no. 6	Week no. 5	Week no. 6	Week no. 5	Week no. 6	Week no. 5	Week no. 6	Week no. 5
Explicit auction Transmissions											
France - Northern It.	FRAN-NORD NORD-FRAN	-	-	-	-	0	0	-	-	-	-
Switzerland - Northern It.	SVIZ-NORD NORD-SVIZ	-	-	100.0%	100.0%	3,439	3,965	3,053	3,610	88.8%	91.0%
Austria - Northern It.	AUST-NORD NORD-AUST	-	-	-	-	0	0	-	-	-	-
Slovenia - Northern It.	SLOV-NORD NORD-SLOV	-	-	-	-	0	0	-	-	-	-
Montenegro - Central Southern It.	CSUD-MONT MONT-CSUD	-	-	100.0%	100.0%	668	756	577	554	96.2%	92.1%
Greece - Southern It.	GREC-SUD SUD-GREC	-	-	-	-	25	25	-	-	-	-
National Transmissions											
Northern It. - Central-Northern It.	NORD-CNOR CNOR-NORD	-	19	34.5%	70.8%	4,053	4,015	1,060	2,054	-	2.4%
Centr.-Northern It. - Centr.-Southern	CNOR-CSUD CSUD-CNOR	582	294	11.9%	55.4%	2,806	2,780	493	1,318	-	3.0%
Central-Northern It. - Corsica	CSUD-CORS CORS-CNOR	-	1	88.1%	44.6%	3,159	3,074	1,674	1,566	13.1%	4.2%
Corsica - Sardegna	CNOR-CORS CORS-CORS	-	1	-	3.0%	214	238	-	130	-	2.4%
Sardegna - Corsica AC	SARD-CORS CORS-SARD	87	36	20.2%	6.0%	214	238	130	200	-	1.8%
Central-Southern It. - Sardegna	SARD-COAC COAC-SARD	-	-	100.0%	100.0%	108	108	80	80	-	-
Central-Southern It. - Southern It.	CSUD-SARD SARD-CSUD	267	-	7.1%	23.2%	720	720	82	128	-	1.8%
Southern It.-Calabria	CSUD-SUD SUD-CSUD	15	1	92.9%	76.8%	887	887	458	297	7.1%	1.8%
Sicilia-Calabria	SUD-CALA CALA-SUD	41	0	-	6.5%	2,933	3,043	-	257	-	-
Sicilia - Malta	SUD-CALA CALA-SUD	5	-	27.4%	40.5%	1,498	1,433	289	386	-	-
	SICI-CALA CALA-SICI	-	-	72.6%	59.5%	2,210	2,251	521	811	1.8%	0.6%
	SICI-CALA CALA-SICI	5	-	53.6%	20.8%	1,436	1,450	345	282	1.8%	-
	SICI-MALT MALT-SICI	-	-	46.4%	79.2%	1,506	1,581	376	541	2.4%	-
	SICI-MALT MALT-SICI	-	-	97.0%	100.0%	225	225	79	110	-	3.6%
	SICI-MALT MALT-SICI	-	-	-	-	225	225	-	-	-	-
Market Coupling Transmissions											
IT Coupling - Northern It.	NORD-COUP COUP-NORD	-	-	100.0%	100.0%	10,000	10,000	4,586	5,038	-	-
Coupling - France Coupling	COUP-XFRA XFRA-COUP	-	-	100.0%	100.0%	1,429	2,066	3,521	4,072	-	-
Coupling - Slovenia Coupling	COUP-BSP BSP-COUP	-	-	100.0%	100.0%	3,576	4,114	430	628	92.3%	91.7%
Coupling - Austria Coupling	COUP-XAUS XAUS-COUP	-	-	6.0%	10.7%	669	669	679	672	0.6%	8.9%
Southern It. - Greece Coupling	SUD-XGRE XGRE-SUD	-	-	92.9%	89.3%	692	695	505	472	87.5%	82.7%
	SUD-XGRE XGRE-SUD	-	-	6.0%	6.0%	191	181	200	166	6.0%	4.8%
	SUD-XGRE XGRE-SUD	-	-	93.5%	94.0%	517	488	505	472	88.7%	89.3%
	SUD-XGRE XGRE-SUD	-	-	15.5%	15.5%	500	500	213	245	3.0%	3.6%
	SUD-XGRE XGRE-SUD	-	-	84.5%	84.5%	500	500	468	417	70.8%	60.7%

Transiti. MWh



Daily Products Market (MPEG)

Products Baseload	Price			Volumes		Open Positions		The unit price differential		
	minimum	maximum	average	MW	MWh	MW	MWh	MWh	Average Price	c€/MWh
	c€/MWh	c€/MWh	c€/MWh							
Monday 5										
Tuesday 6										
Wednesday 7	120.0	120.0	120.0	150	3,600	150	3,600			
Thursday 8	119.0	119.0	119.0	150	3,600	150	3,600			
Friday 9	115.0	115.0	115.0	150	3,600	150	3,600			
Saturday 10										
Sunday 11										
Week	115.0	120.0	118.0	450	10,800					
Peakload										
Monday 5	-	-	-	-	-	-	-			
Tuesday 6	-	-	-	-	-	-	-			
Wednesday 7	-	-	-	-	-	-	-			
Thursday 8	-	-	-	-	-	-	-			
Friday 9	-	-	-	-	-	-	-			
Week										
TOTALE				450	10,800					



Forward Electricity Market (MTE)

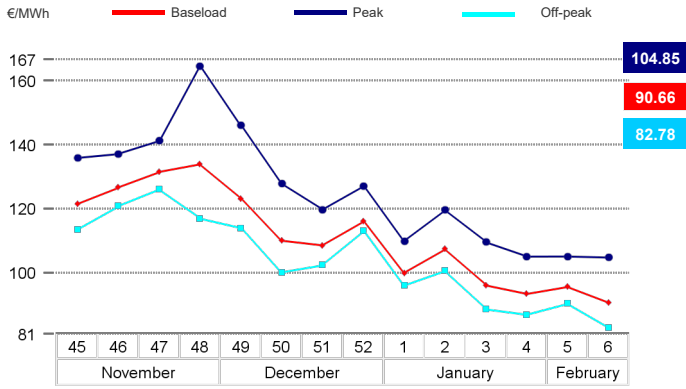
Products baseload	Market					OTC				Total			
	Minimum Price	Maximum Price	Check Price*	Trades	Volumes	Volumes		Volumes		Open Positions*			
	€/MWh	€/MWh	€/MWh	% change	No.	MW	MWh	MW	MWh	MWh	% change	MW	MWh
March 2024	-	-	88.91	-5.0%	-	-	-	-	-	-	-	8	5,944
April 2024	-	-	83.29	-5.0%	-	-	-	-	-	-	-	-	-
May 2024	-	-	83.29	-5.0%	-	-	-	-	-	-	-	-	-
Quarter 2, 2024	-	-	83.29	-5.0%	-	-	-	-	-	-	-	5	10,920
Quarter 3, 2024	-	-	94.80	-5.0%	-	-	-	-	-	-	-	5	11,040
Quarter 4, 2024	-	-	99.32	-5.0%	-	-	-	-	-	-	-	5	11,045
Quarter 1, 2025	-	-	104.23	-5.0%	-	-	-	-	-	-	-	-	-
Year 2025	-	-	84.88	-5.0%	-	-	-	-	-	-	-	-	-
Total													38,949
Products peakload													
March 2024	-	-	96.61	-5.0%	-	-	-	-	-	-	-	2	504
April 2024	-	-	84.80	-5.0%	-	-	-	-	-	-	-	-	-
May 2024	-	-	90.46	-5.0%	-	-	-	-	-	-	-	-	-
Quarter 2, 2024	-	-	87.12	-5.0%	-	-	-	-	-	-	-	2	1,560
Quarter 3, 2024	-	-	100.91	-5.0%	-	-	-	-	-	-	-	2	1,584
Quarter 4, 2024	-	-	114.49	-5.0%	-	-	-	-	-	-	-	2	1,584
Quarter 1, 2025	-	-	115.74	-5.0%	-	-	-	-	-	-	-	-	-
Year 2025	-	-	91.15	-5.0%	-	-	-	-	-	-	-	-	-
Total													5,232
TOTAL													44,181

* Referred to the last trading session of the week

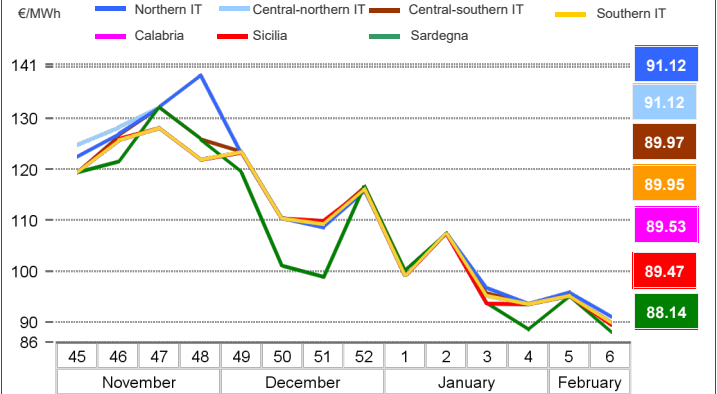
OTC Registration Platform (PCE) - Transactions registered with delivery in week

	Transactions registered			Schedules	Injection		Withdrawal	
	MWh	% change	Structure		MWh	% change	MWh	% change
Baseload	706,134	19.5%	17.9%	Requested	1,384,789	-4.0%	1,811,203	+1.1%
Peak	990	0.0%	0.0%	Rejected	247,965	+4.4%	0	-100.0%
Off Peak	810	0.0%	0.0%	Registered	1,136,825	-5.7%	1,811,203	+1.2%
Non Standard	3,220,565	-2.8%	81.7%	Scheduled deviation	1,404,256	+5.2%	729,878	-2.7%
Bilaterals	3,928,499	0.5%	99.7%	Balance of schedules			674,378	
MTE	1,464	0.0%	0.0%					
MPEG	10,800	0.0%	0.3%					
PCE total	3,940,762.73	0.5%	100.0%					
Net position	2,541,081	+0.0%	+64.5%					

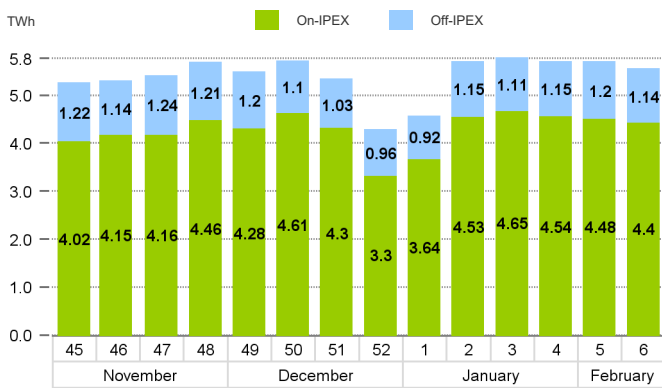
MGP - Purchasing Price (PUN)



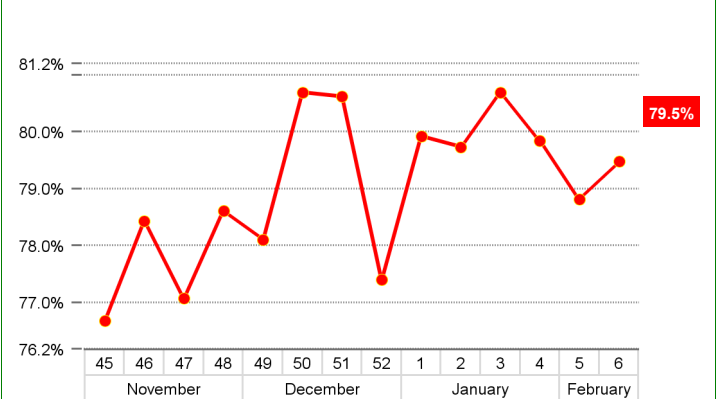
MGP - Selling Price



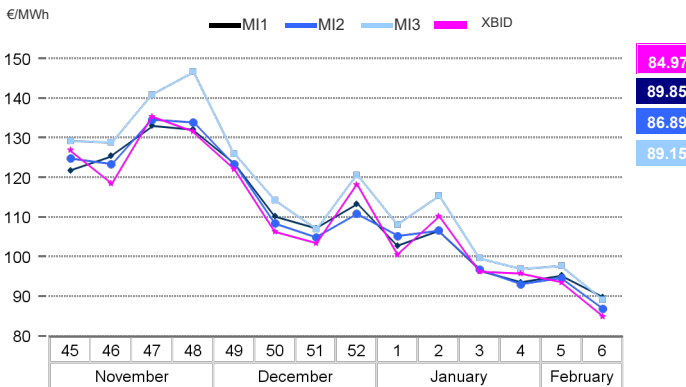
MGP - Volumes



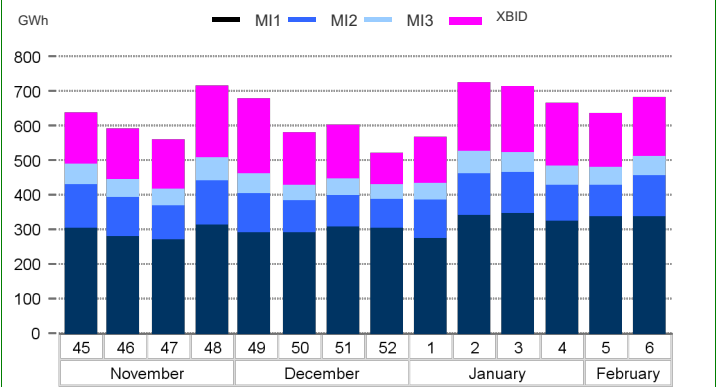
MGP - Liquidity



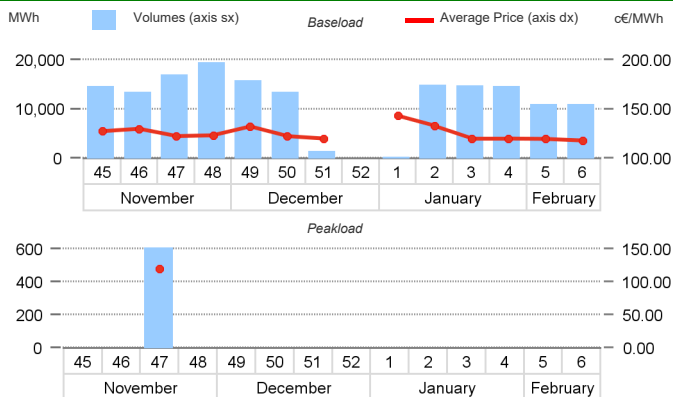
Intra-Day Market (MI) - Prices



MI - Volumes



Daily Products Market (MPEG)



OTC Registration Platform (PCE)

